

THE LINK

ISSUE 66

JUNE/JULY/AUGUST 2025

IN THIS ISSUE

New preaching
plan and
Summer events!

The light shines in the darkness, and
the darkness has not overcome it.
John 1:5

Contact Details

SUPERINTENDENT	Rev. Derek Grimshaw	01362 882116
CIRCUIT MINISTERS	Rev. Anne Richardson	01760 720858
	Rev. Jonathan Bell	01263 710009
CIRCUIT ADMINISTRATOR	Marianne Lincoln	07736 467831
	centralnorfolk@outlook.com	
CIRCUIT SAFEGUARDING OFFICER	Seb Bell	
	centralnorfolksafeguarding@outlook.com	

It is a pleasure to be continuing the amazing work that Tony Hey did to provide the Link magazine each quarter.

In his words 'The Link is intended as information for ourselves, a means of praying through all that is happening, and something to give to visitors to our Churches.'

It may look a bit different to previous issues and I may have missed things, so please bear with me as I learn the ropes.

Please send any contributions for the next issue to the details listed here.



**FOR THE SEPT - NOV EDITION
SATURDAY 5TH JULY**

**Please send information for
publication to Hannah Martin**

Please include details of activities
up to the end of November



Email: cnc.thelink@gmail.com



Phone: 07538281707

Table of Contents

MINISTER'S LETTER	4
FAREWELL FROM ANNE	5
THE LEGACY OF OUR SMALL CHAPELS	6
HOLT CHOIR PERFORMS	7
FINAL SERVICES & FUTURE PLANS	8
SUPPORTING CHARITIES AT HELHOUGHTON	9
THE HIVE	10 - 12
NATURE IN NORFOLK	13
BIBLE MONTH	14
PREACHING PLAN	15 - 22
NEWS FROM CHURCHES	23 - 29
DATES AROUND THE CIRCUIT	30 - 34
REGULAR DATES	35

Minister's Letter

Dear Friends,

Welcome to our June-August edition of The Link. We apologise that we weren't able to publish the March-May edition and I have heard as I have travelled around the circuit how much people have missed our circuit newsletter. It is impossible to start this letter without mentioning the huge debt of gratitude we owe to Tony Hey for editing The Link in the past. I can say with honesty that The Link is one of the best circuit newsletters I have ever seen and a lot of that is down to Tony's meticulous attention to detail, as a circuit we should be proud of this publication and its range of content and we extend to Tony's family our best wishes and love.

Moving forward, we now have a new editor, Hannah and we are grateful to her for taking on this role. I am sure that we will offer her the same levels of support we have given to Tony and send her contributions for future editions and remember her work in our prayers.

As I look back at the June to August edition in 2024 I note that we were saying a fond farewell to Jacqui and Jen as they prepared to move on. A year on we are now saying another goodbye as Rev Anne leaves us to take up her new appointment in Guernsey. Anne moved into the East Anglia District in 2014 and initially worked predominantly with the Sign The Cross Church serving the deaf community and more recently has been a much valued member of the Circuit Staff Team and during that time has had Pastoral charge of over half of the Churches in the Circuit.

Anne's ministry has been widely appreciated in the churches and her wisdom and experience have fed into the leadership of the circuit and Anne will be sadly missed. We all wish her well in the next chapter of her ministry and I invite you to remember Anne (and Merlin) in your prayers as they make a move after spending such a long period of ministry in this area.

Making the plan has been a huge challenge this time, partly because we have a fourteen Sunday quarter and partly because a lot of people take holidays during the summer quarter. I apologise that because of this we have a lot of Fellowship Services, I hope that you will understand.

Best Wishes
Derek Grimshaw

Farewell from Anne



This is my last opportunity to write something for the Link as a minister in the Circuit. In August, I will be sailing off to Guernsey to be a minister on the island for the next 5 years until I retire in 2030. Then it will be back to Norfolk as a Supernumerary Minister!!

Although I've only been a circuit minister here since 2020, I've been in the circuit since 2015, when my sister and I moved to Fakenham. For five years, I worked as a sign language interpreter and was involved with setting up the Deaf church and what has since developed into the Deaf ministry within the District. The Deaf church work has continued and going forward will be led by a team of Deaf Christians.

During these 10 years, I think I've been to every church in our circuit except for Holkham! By moving sections last year, I've served a total of 15 churches as minister! In every church, I've met wonderful Christian people, who serve their church and community with great love and diligence. We have some marvellously faithful folks in our churches without whom nothing would happen! It has been a joy to serve alongside you!

When I return, I wonder what our circuit and all the churches will be like? Will they be the same as they are now, but smaller? Or will they be thriving and growing? Will some have had to close? What will make the difference? Every church needs a certain level of money to meet all its outgoings, and every church needs people who will take on the necessary roles. When either or both of these things are absent, churches are forced into accepting a new reality. However, where people work together and share tasks, where they find the fun in fundraising, and where, most importantly, their focus is on God and how they can serve God in their community, there is Life! The life of the Spirit in a Church is not dependent on how many people go to worship in the building, but on how many of those people are being disciples of Jesus everyday. Remember the words of Jesus in John 15? *"Abide in me as I abide in you. Just as the branch cannot bear fruit by itself unless it abides in the vine, neither can you unless you abide in me. I am the vine, you are the branches. Those who abide in me and I in them bear much fruit, because apart from me you can do nothing."*

May you continue to abide in Jesus, may your hearts be filled with His love and grace, and may you find joy in being part of our Methodist circuit. Pray for me as I will pray for you. And if you come to Guernsey, look me up!!

Anne Richardson

The Legacy of our small chapels

This year our little chapel (Saham Hills) enters its 149th year and we were only five worshippers from our small congregation for our last Advent service, due to illness or other commitments.



Whilst clearing all our Christmas decorations and packing away our knitted Nativity set I pondered on the history of the chapel. The nativity set was knitted many years ago by Queenie Baldwin, a long term valued member of the chapel whose family still help us now.

I myself have a Church of England upbringing and have only lived in Saham Hills for seven years moving a few doors from the chapel. After a month or two I walked into a coffee morning and felt the warmth of history and friendship within the small chapel, I was welcomed with conversation and inclusion and introduced to an art teacher who ran a small art group. That lady was Yvonne Harold who attended the chapel Sunday School as a child and is still an enthusiastic member of our congregation now over ninety years old. I attended her classes and eventually took over the class from her when it became too much and I now consider her a dear friend as are all the ladies here.

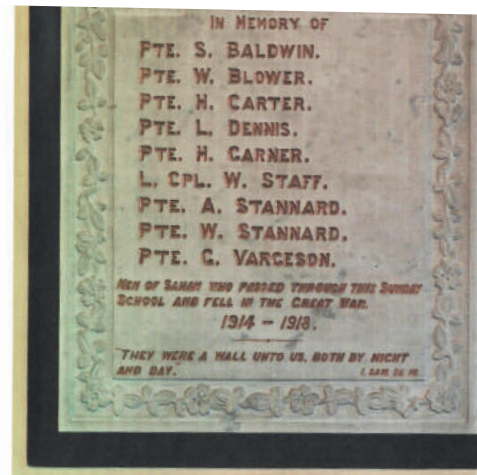
David Staff, a lovely patient man would always talk to me and remember my name. He was a member of another stalwart chapel family, whose father before him had served the chapel and David became Sunday School Superintendent and teacher. The chapel had a thriving Sunday school in the late 19th century and into the twentieth century from the local largely farming and rural community. Communities in those days were much closer and families stayed within bounds for generations. David was blind in his last years but would come to service and sing all the hymns from memory and still always remembered me when I spoke to him.

Gwyneth Walpole, a quiet vibrant lady who played our organ for many years, a sound we miss now and cherish whenever someone comes to play. Gwyneth was a teacher, another long term resident of Saham Hills who attended the Sunday School and whose brother Eric Cox was the chapel secretary for a long time. Gwyneth's family still support us, she loved her garden and always supplied the flowers in chapel with a fresh decoration each week, a tradition we still keep today. Gwyneth was always ready to help in any way when needed, with quiet enthusiasm and she is sadly missed.

Peter Wright, not a long time Saham resident, came from Essex where he was a Methodist local preacher. He joined the circuit after he had married our own Elizabeth and moved to Norfolk.

Like Peter, Elizabeth has a wealth of biblical knowledge and practical enthusiasm which we all benefit from and we always enjoy her services. Peter was chatty and friendly, he made an effort to speak to everyone and he would love to talk to my husband, who was waiting outside chapel for me, about motorbikes.

Our Memorial plaque from the 1914 war records many of the names still associated now within the Saham villages. Carter, Baldwin and Staff are among those names and I feel privileged to have met and learnt from members of these chapel families. Our small chapel is not in a town or situated on a high street, Saham Hills is a small hamlet between Watton and Saham Toney; we have no passing footfall other than our local residents who thankfully support us in our fundraising and we do appreciate them.



Generational families like these have been the bedrock of village chapels in our circuit but many small villages are finding their congregation reduced and a few stalwarts keeping the chapel alive. Our merry band here, under Maggie's leadership, Marian, Jane, Elizabeth, Diana, Yvonne, Arlene and me will endeavour to deliver our usual weekly services and coffee mornings this year to continue the legacy of friendship and worship in our beloved chapel. We work hard and pray even harder that we will be able to celebrate our 150th anniversary in 2026.

Dot McIlroy
Saham Hills Methodist Church

Holt Choir performs!

Holt Methodist Choir was in action at a well attended concert in the town's community centre. A number of musical groups performed at the successful event in December.

Our Holt singers opened the second half with a version of Go Tell It On The Mountain.



This was followed in complete contrast with "With a little help from my friends", with its appropriate message of friendship and support. Seconds before the performance the CD player used in rehearsals self-destructed and so the singing was accompanied by the solo harmonica. The choir responded with a lyrical and melodic Capella interpretation.

Holt Choir will be practicing and singing throughout the year and welcomes new vocalists.

Robert Sutherland
Holt Methodist Church

Final Services & Future Plans!

Sporle Methodist Church

At the Circuit meeting in March, Sporle Church asked for permission to 'cease to meet'. Over the past few years, they have had the sad experience of saying goodbye to several members who have moved away, moved into a nursing home or died. All of a sudden, there are just three people left, and they have taken the decision to close.



Sporle Church has had a rich history - the present building dates from 1862! - and through all those years has served its village community well. We will reflect on and celebrate the past, as we worship God who holds us in the present and into the future, when we meet for our final service on **Sunday 20th July at 3pm**. If you are able to join us, you will receive a warm welcome and there will be refreshments afterwards.

Great Ellingham Methodist Church

Great Ellingham Methodist church has taken the decision to 'cease to meet'. This decision was not taken lightly and it was the balance sheet that forced this upon us. We simply don't have enough in the bank to keep going for another year!! Taking the sensible decision doesn't make it any less painful but we're making the best of it as we can.



We have already started to lay the foundations for the Circuit Repurposing Group by gathering local people together to collect views and ideas about what our building could be used for. By the time we actually cease to meet we hope there will be some clarity for the future and a developing plan that will benefit the community and be an outreach for the church.

Our final service of celebration will be on Pentecost **Sunday 8th June at 2.30pm**.

Our invited preacher is Rev Barbara Winner. If you'd like to join us, come early for a seat!!

Please pray for us as we close and for the future of the Methodist work in Great Ellingham.

Supporting charities at Helhoughton!

Helhoughton Monthly Charity Coffee Mornings

Over £1,700 was raised from these events for deserving charities in 2025!

Thank you so very much for your support. 😊

These are the charities supported so far this year and the totals raised:

- January – **Motor Neurone Disease Association £172**
- February – **Mercy Ships £62.50**
- March – **Swaffham and Litcham Home Hospice £100**

Coming up, we are fundraising for...

- **Veterans Central** – West Raynham SHQ (Station Headquarters) on **24th June**, supporting military and emergency veterans and the larger community in wellbeing, socialization and community activities. Many aspects of the facility support wellbeing through engagement and participation, or simply by finding a quiet and supportive environment.
- **Crisis** - the national homeless charity on **29th July**
- **DEC** (Disasters Emergency Committee) - Myanmar Emergency Appeal on **26th August**

All welcome 10am – 12noon in Helhoughton Village Church Hall on The Street.

We also act as a collection point for items for the **Mid Norfolk Foodbank**; food, toiletries and cleaning products.

Helhoughton Save the Children Quiz Night

Our annual Quiz Night was held on **Saturday 8th March** in the Village Church Hall and was the best attended yet! There were about 60 of us, children as well as adults, and a record 10 teams!

The amount raised from entry fees, a raffle, the sale of greetings cards plus donations totalled **a wonderful £500!**

A big heartfelt thank you from Rob and myself to all those who supported this UK and worldwide charity. 😊



**Elizabeth Lodge,
Tittleshall Methodist Church**



THE HIVE

CREATIVITY ~ SPIRITUALITY ~ WELL-BEING

The first season of 2025, called 'Spring Forward' is almost at an end and the content has been refreshed with some new themes such as Poets and Painters and Easter Music. At the start of the season, we were delighted to welcome Rev Helen Hollands (District Chair) and a number of Pioneers around East Anglia to a Gathering hosted by the District Mission Enabler, Dr Yasmin Finch. A rewarding day for all.



ABOUT THE HIVE

OUR MISSION STATEMENT

The Hive is a place for people of all faiths and none.

Our purpose is to awaken people to their spiritual selves,

by using channels of creativity including music, poetry and the visual arts; the natural world; the senses and quietude;

by nurturing observation, feeling, respect and connectedness

by enabling healing and wholeness.

Awake, my soul!

OUR VALUES

Listening

Learning

Seeking

Sharing

Chalk Hill, Great Cressingham, Norfolk IP25 6NP
Find us with What3Words: winds.fuzzy.stages
E: thehiveplace@gmail.com T: 07976 286 645

Email: thehiveplace@gmail.com



Charity Reg. No.: 1134271

We recently created a **mission statement** for The Hive which expresses our **purpose** – “to awaken people to their spiritual selves” and our **values** – “listening, learning, seeking, sharing.”

An exciting development at The Hive has been to create a 'pop-up' at Blakeney while the Circuit Repurposing Group looks into options for Blakeney church going forward.

Rev. Jonny Bell joins The Hive team for the Blakeney pop-ups which will run once a month until August this year. Jonny has been liaising with local people and Seb Bell is helping with the social media posts. The Blakeney events draw on the programme at Great Cressingham. We have held three gatherings so far and there is already a sense of community forming.

The latest event was a Walk and Talk beginning with a video of a guided walk around historic Blakeney, followed by a gentle amble to take in some of the history in person. It was a beautiful day for the Walk and enjoyed by 4 legs (Scrappy) as well as 2 legs!



Back to Great Cressingham for the Spring Sing which gathered a lot of voices making plenty of harmony!

There are two exciting developments for the future of The Hive: we were contacted by **Cliff College** to ask if we would offer a placement for two of their students to shadow, observe and take part at The Hive as a **New Place for New People**. We are looking forward to welcoming them for the first two weeks of May.

Towards the end of last year, we made an application to District for funding for a **part-time worker** at The Hive and we are thrilled that the application has been accepted by District and approved by Connexion. This appointment will contribute a new chapter to the on-going story of The Hive, providing continuity and enabling us to explore even more new ways of being church in today's world.

Sarah Rodgers
April 2025

THE HIVE AT BLAKENEY

METHODIST CHURCH, 110 HIGH STREET, NR25 7NX
FOURTH** THURSDAYS 2.00 – 4.00PM

Thursday 23 January 2.00 - 4.00 | **THOUGHTS ON THURSDAY**

Thursday 27 February 2.00 - 4.00 | **LET'S TALK ABOUT IT - CLIMATE CHANGE**

Thursday 27 March 2.00 - 4.00 | **WALK AND TALK**

Thursday 8 May** 2.00 - 4.00 | **CELTIC JOURNEYS**

Thursday 22 May 2.00 - 4.00 | **LET'S TALK ABOUT IT - NEURODIVERSITY**

Thursday 26 June 2.00 - 4.00 | **THOUGHTS ON THURSDAY**

Thursday 24 July 2.00 - 4.00 | **MUSIC FOR BODY, MIND & SOUL**

Thursday 28 August 2.00 - 4.00 | **OPEN PLAY READING**

All our events are
free - donations
welcomed

All ability access



Light
refreshments
provided



Methodist Church, 110 High Street, NR25 7NX

Find us with What3Words: ogre.sonic.sulk

E: thehiveplace@gmail.com T: 07976 286 645

Email: thehiveplace@gmail.com



THE HIVE
CREATIVITY ~ SPIRITUALITY ~ WELL-BEING

Charity Reg. No.: 1134271

Nature in Norfolk



It was seeing this Drooping (or Nodding) Star of Bethlehem near Baconsthorpe and then researching its name that inspired me to write this article. When I cycle the quiet lanes of Norfolk, or further afield, I am always noticing the changing seasons and weather. I see trees coming in to leaf, wild flowers blooming, crops growing, and I peer over hedges to see into gardens and lean over bridges looking at river life.

If you look at the Drooping Star of Bethlehem from below you will appreciate its 6 petaled, star like shape. Folklore has it that after the Star shone over Bethlehem at Christ's birth it fell to earth, shattered and became the flower. It is native to Europe and SW Asia and has spread here by escaping from gardens. Culturally it is associated with purity and hope, atonement and reconciliation. It is sometimes called Nap-at-Noon and Sleepy Dick because of its nodding head.

Although March was a cold month with north winds, day time temperatures when out of the wind were above average, but we still had night frosts. Wild flowers started blooming early, I normally look for bluebells late April but this year saw my first good display on the 12th April.

Although topsoil in fields and gardens has been dried by the wind and lack of rain there is plenty of moisture a few inches down. The river Glaven is very full at Letheringsett ford, a pleasant walk on footpaths from Spout Hills behind Holt Methodist Church. Primrose, white and purple Violet and Lesser Celandine line the verges on lanes, and are spreading in my garden. If you know where to look wild garlic leaves can be picked for a strong addition to your salad. Plumstead Green pond and wild flower meadow are worth a visit, a 1/4 mile west of Plumstead church. The meadow was sown with wild flower seed a few years ago and cowslips are flowering now. That's a flower name with an amusing origin - in Old English it is called Cuslyppe as in growing where cows left their dung for us to slip on, the same for the Oxslip flower.

Having mentioned Lesser Celandine in flower on roadsides, at Holt Methodist Church there is a lot of Greater Celandine growing, a tall plant with paler yellow flowers. It is sometimes called the Celandine Poppy and also Swallow Wort because it 'comes and goes with the swallow'. It is starting to flower now, the 17th April, so I must keep my eyes peeled for my first swallow.

Angela Mason
Holt Methodist Church

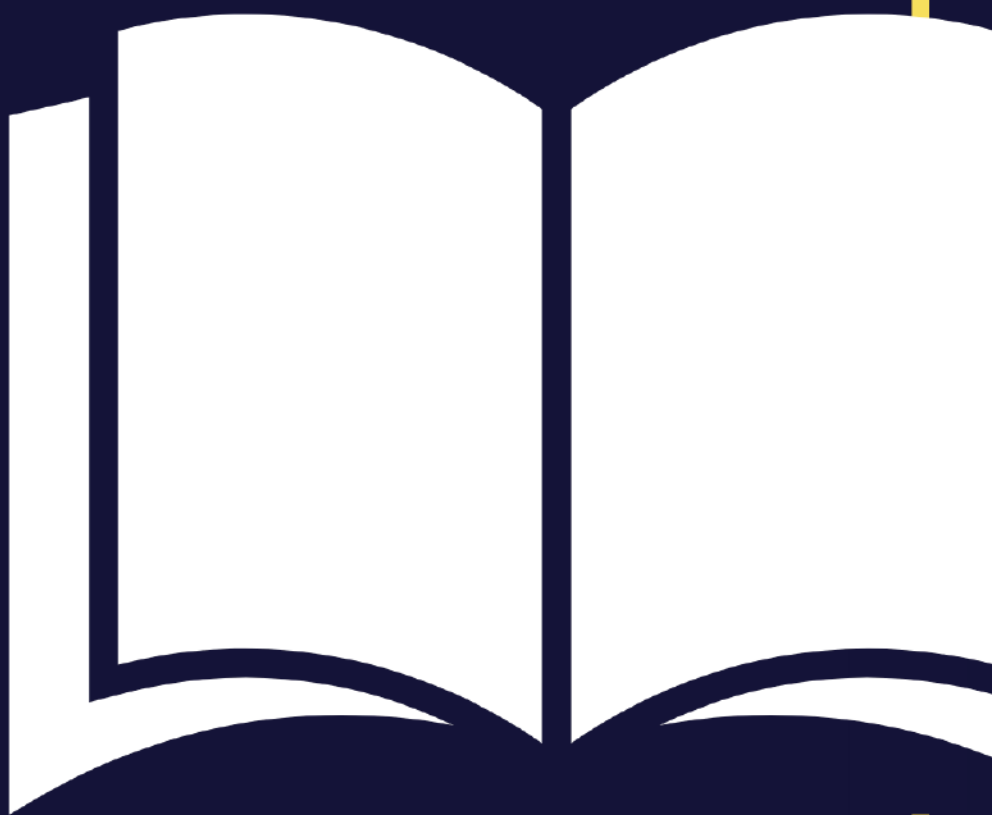
BIBLE

7 PM
EVERY THU
IN JUNE
2025

MONTH

Exploring John's Gospel
at **Holt Methodist Church**

Thursdays 7 pm
5th / 12th / 19th / 26th



Contact Jonny Bell for more info:
jonathan.bell@methodist.org.uk

News from Churches

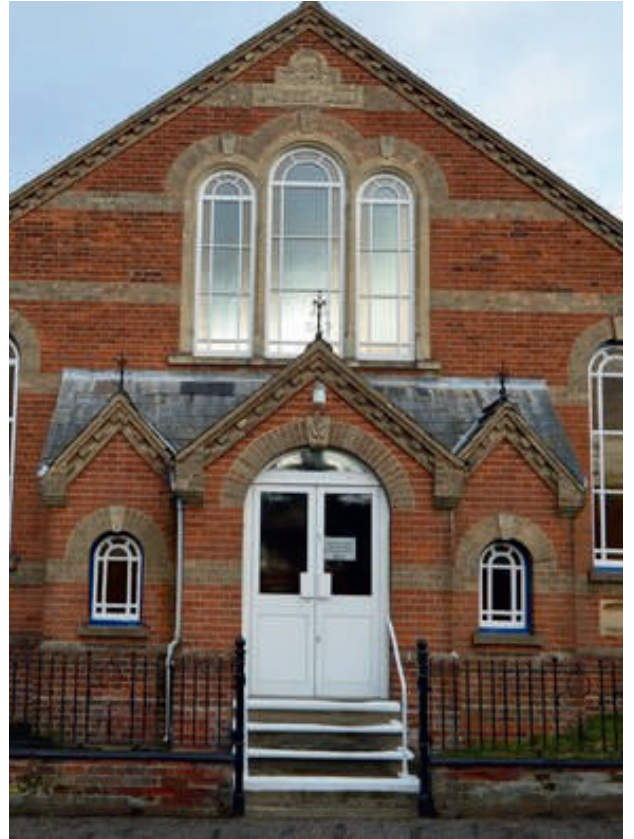
Mattishall

Sadly, in December the decision was made to close the Dementia Support Group (The Link) due to low attendances.

The annual World Day of Prayer service was held in March at the Parish Church but arranged by us. It was led by Frances Middleton, a local preacher in the Norwich Circuit. She had briefly visited the Cook Islands on holiday and was able to attend worship on a Sunday whilst she was there. Several denominations took part and enjoyed fellowship over refreshments afterwards. This included a banana dish made by Frances from that country.

The "A letter for Lent" course was held jointly with members from Garvestone chapel.

A joint Bible Study started on 1st May and alternates between the two chapels.



Wells

By the time you read this we will have had all of our Easter activities, including a visit from The Pilgrim Cross group, and our Spring Plant Sale.

The main events during the summer are centred around Wells Carnival Week, which this year is from Friday 1st to Sunday 10th August. We are planning to have a **"Mindful Music" session on Wednesday 6th August at 10.30am** (hoping that we don't experience another power cut as happened last year!) and a **Carnival Songs of Praise service on Sunday 10th August at 11am**. The Carnival Songs of Praise last year was a very joyful event and we were joined by many members of other Churches in Wells.



SPRING PARTY

12 PM 8TH JUNE

***BBQ, MUSIC AND
WORSHIP AT
HOLT MEMORIAL
GARDENS***

You are invited to join our Spring Party

where we will have a BBQ, sing, and have good company to celebrate Pentecost.

This will be on 8th June 2025 at
Holt Memorial Gardens, Albert Street, NR25 6HX
from 12pm until about 1.30pm.

The BBQ will have meat, vegan and gluten-free options available.

Come as you are and join in with a community
that will greet you with a warm welcome.


Holt Methodist Church

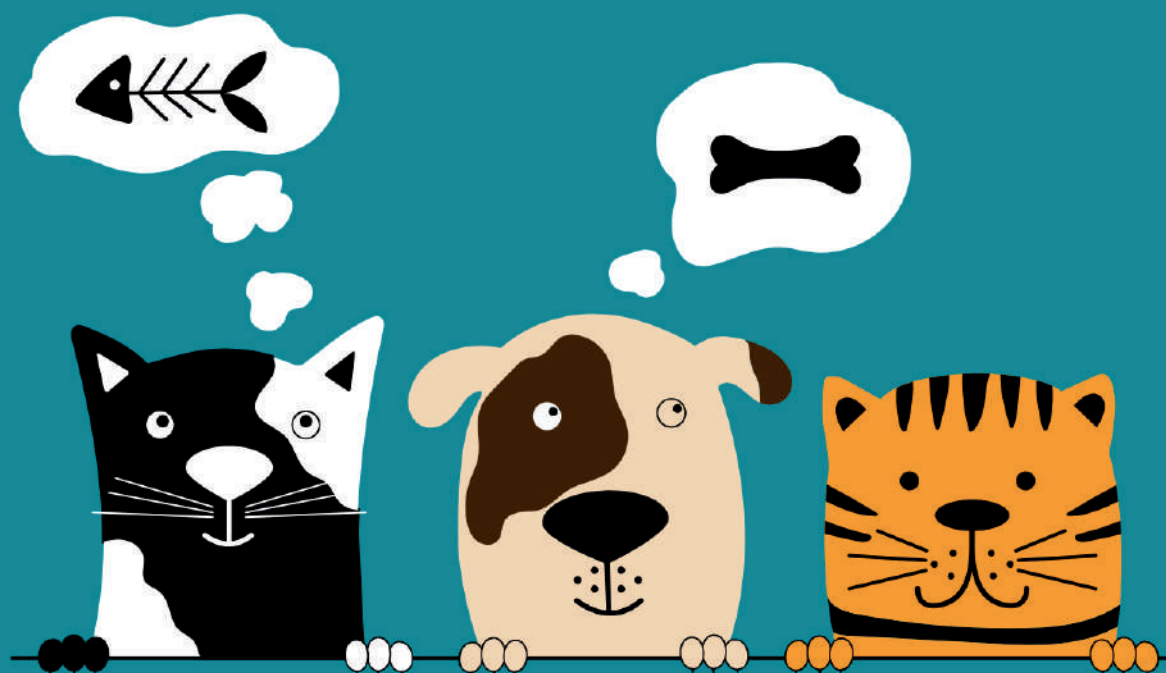
SONGS OF PRAISE

AT THE
METHODIST
CHURCH

10TH AUG
11 AM



Wells-next-the-Sea **Methodist** Church
10 Theatre Rd, Wells-next-the-Sea NR23 1DS



PET SERVICE
3RD AUG
11 AM



Holt Methodist Church

1 Norwich Road, Holt, NR25 6SA

www.holt-methodist.org.uk

News from Litcham



I love this time of year, I am definitely a summer person and with a particularly big birthday coming up, I find myself reflecting on what I have already experienced but also what is still to come. God has been good to me. It doesn't mean I haven't suffered pain or loss, but I have never been on my own, how lucky am I?

As The Bible tells us in Jeremiah 29 :12 *'For I know the plans I have for you, declares the Lord, plans for welfare and not for evil, to give you a future and a hope.'*

For all those of you that may be facing a loss or hardship, I hope these words bring some comfort. Surround yourself with friends and family that can keep your pot of love and care filled to the brim and don't be afraid to ask for help.

God Loves us all!!!

Here in Litcham we have enjoyed many wonderful services together so far this year, for some we have joined with our friends from Tittleshall, for some we have been joined by visiting preachers, each service unique and special in its own way. Our doors are always open and a big smile and friendly face will await you.

Over the next few months we have several events taking place, feel free to join us at any time:

- Our **weekly coffee mornings** continue on a **Thursday at 10.30 am**, you will be welcomed with a cup of tea or coffee and plenty of chocolate biscuits.
- On the third Friday of each month is our regular bible study,
- **Saturday May 17th 10.30 to 12.30** we are holding a coffee & craft morning. If you would be interested in taking part in this, please let us know.
- **Saturday 19th July** will be our annual **Cream Tea**. Come and join us for a full cream tea with entertainment included.

And remember:

Deutoronomy 31:8 *'It is the LORD who goes before you. He will be with you; he will not leave you or forsake you. Do not fear or be dismayed.'*

Maria Martin,
Litcham Methodist Church

News from Walsingham

It has been a very busy time at Walsingham Methodist chapel. Whilst continuing the monthly evening services and meals on the second Sunday of the month (4.30pm) we've hosted school visits through the Shrine Education department and look forward to more plus schools who book directly with us. It's interesting that many of the youngsters have little idea about what goes on and find great delight in climbing the steps to the pulpit. Emphasis on the shrine organised visits is on comparing our activities with those of the Anglican Church and our focus on preaching and non-alcoholic wine for communion. It is good to have these visits and with the older secondary age pupils more questions arise.



In November a Methodist and Roman Catholic retreat took place in Walsingham with a communion service in the evening at the chapel with the celebrant Revd. Ruth Gee former President of Conference. At the end Aileen gave a very short talk on the history and work of the chapel through its open days and visits.

In December 4 days of a Nativity Crib display brought many people into the chapel. Over 80 cribs were displayed and it is planned to hold this again in 2025 for longer. We were grateful to the volunteers who helped to steward this and will be looking for more volunteers for 2025. £100 was received in donations which will continue to help the chapel in its mission and outreach. We do not serve refreshments as there are several coffee shops and other eating places which we do not wish to take trade from. Out of season Walsingham can be very quiet and it's a tough time for local tradespeople.

The storms in early January resulted in part of our guttering collapsing. Fortunately for us, the local weather confirmed gusts in excess of 55mph (which is the cut off for insurance purposes) and we were able to claim for repairs which have now been completed.

In April the chapel will again host the Pilgrim Cross groups who make their way to Walsingham for Good Friday and Easter weekend.

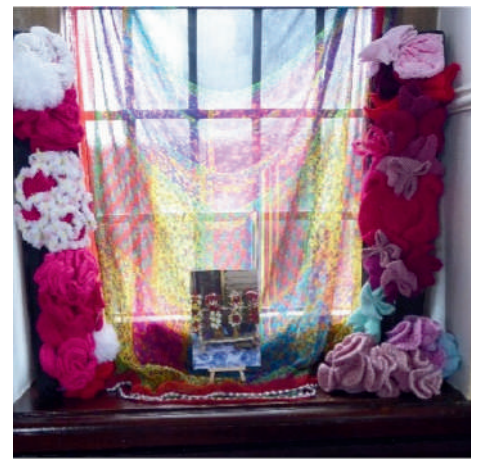


On the Saturday the group will hold their morning service in the chapel. Each year a different group lead this service and these can be reflective, musical or traditional. The group return on Easter morning at mid-day singing and processing round the village to the chapel then leaving their beautiful, decorated crosses outside before a closing service. When they leave they move onto Friday Market Place for a closing blessing. It is a very moving experience. Some individuals take 3-4 weeks to walk to Walsingham others walk shorter distances and those with children may come direct to the village or walk the last mile.

A Busy Week at Watton

On Ash Wednesday (5th March) we served seven different varieties of home-made soup with a variety of breads to the community in the Methodist Centre. Not only did some people request a second serving, but there was considerable conversation among the participants. Along with a retiring collection the following Sunday, £175 was raised for Christian Aid.

The following day (6th March) a team of people decorated the church in readiness for the World Day of Prayer on Friday 7th March. The theme this year was the Cook Islands. Our 'Tuesday @ 2 Group' joined with the ecumenical WDP team to make 50 orchid flower brooches for the congregation to wear at the service and keep afterwards. The music for the service was beautiful and opened with the sound and sight of waves breaking gently on a sandy beach. Our minister, Revd. Anne Richardson welcomed everybody. Five other church groups were represented from Watton, along with people from outlying villages, as well as a new group called 'Love Watton', who are seeking to bring about a greater sense of community in the town.



Dates Around the Circuit

Beetley

Services: 10.30am on the 2nd & 4th Sundays
6pm on the 1st & 3rd Sundays

Big Sunday: 10.30am on 31st August

Chapel Anniversary: 10.30am on 13th July, led by Rev. Derek Grimshaw

Prayer Meetings: 9.30am. 4th June, 2nd July, 6th August

Drop-In: 2 - 3pm. 4th & 18th June, 2nd, & 16th July, 6th & 20th August

Knit 'n' Natter: 2 - 3pm. 25th June, 23rd July, 27th August

Coffee Mornings: 9.30 - 11.30am. 26th July

Dereham Trinity

Services: Every Sunday at 10.45 am

Church Anniversary: 22nd June at 10.45 am led by Rev Derek Grimshaw

Mid Week Communion: 10.30 am. 5th June; 3rd July; 7th August
(Contact Jacky Woor 01362 697860)

Lunch Club: 12 noon. 12th June; 10th July; 14th August
(Contact Katharine 01362 691225)

Coffee Mornings: 10-11.30 am. 19th June; 17th July; 21st August
(Contact Jacky 01362 697860)

Cards & Chatter: 10-12 noon. 26th June; 24th July. Not on in August
(Contact Sylvia Meredith 01362 693425)

Women's Own at 2.15 pm. 3rd, 10th, 17th & 24th June. No meetings in July or Aug.
(contact Olwyn Brough 01362 692799)

Coffee Morning 10-12 noon. 31st July
at the home of Sylvia and Richard Meredith (12 Elvin Road 01362 693425)

Fulmodeston

Services : 1st and 3rd Sundays of each month at 2.30pm.

Garvestone

Services: 6pm During the Summer Months
3rd Sundays United Service at 11am

15th June United Service 11am at Garvestone
20th July United Service 11am at Parish Church
17th August United Service 11am at Garvestone

Great Ellingham

Services: Usually fortnightly on Sundays in the schoolroom at 2.30pm
Last Service on 8th June at 2.30pm with Preacher Rev Barbara Winner

Gressenhall

Services: 1st and 3rd Sundays of the month at 2.30pm followed by refreshments

Hingham

Services: Every Sunday at 10.30am

Coffee Shop with stalls: 10am - 12noon. 7th June, 5th July, 2nd August

Holt

Services: Every Sunday at 11am

Informal Evening Services: 6pm. 22nd June, 20th July, 17th & 31st August

Friday Prayer Time: 9.30am on Fridays

Bible Study: 7pm. 5th, 12th, 19th, 26th June. 3rd & 17th July. 7th & 21st August

Spring Party: 12noon - 1.30pm. Sunday 8th June at Holt Memorial Gardens

Afternoon Teas: 2 - 4pm. 20th June & 15th August

Summer Fayre: 11am - 2pm. Saturday 19th July

Holt Choir Practice: 4pm. 13th & 27th June, 11th & 25th July

Pet Service: 3rd August at 11am

Litcham

Services: Every Sunday at 10.30am

Coffee Mornings: Every Thursday 10.30am - 12noon

Bible Study: 3rd Fridays at 10am

Annual Cream Tea: Saturday 19th July at 2pm

Mattishall

Services: Every Sunday at 2.30pm

New Holkham

Services: June & July - Last Sunday of the month at 2.30pm

August - 2nd Sunday of the month at 2.30pm

Saham Hills

Services: 1st & 3rd Sundays of the month at 2.30pm followed by light refreshments

Summer Fayre Coffee Morning: 16th August 10am till 12noon

Sculthorpe & Fakenham

Services: Every Sunday at 11am

Open Afternoon: 21st June Chapel open 2pm-5pm to view crafts etc.
Refreshments. Please come all are welcome.

Service of Talents: 22nd June 2.30pm
Speaker Rev Jonny Bell. Please come and hear all the talents that abounds locally.

Sporle

Services: 3rd Sunday at 11am Last Service on 20th July at 3pm

Stibbard

Services: Last Sunday of the month at 11am

Lunch @ The Centre: 12.30 p.m (Wednesdays) 11th June, 9th July, 13th August

Choir Practice: 7.30 p.m (Fridays) 6th & 20th June, 4th & 18th July

Proverbial Prattle: 2.30 p.m (Wednesdays) 25th June, 23rd July

Quiz Night @ The Centre: 7.00 for 7.30 p.m. Friday 29th August

Railway Film Afternoons: 7.30 p.m (Saturdays) 7th June, 12th July

Lammas: A mid-week service to celebrate Summer - Thursday 31st July at 2 pm

Swaffham

Services: Every Sunday at 10.45am

The Meeting Place Drop-In: 10am - 12noon. Every Tuesday

Green Pastures pop-up Christian book shop will be with us on 10th June.

Please join us and support them. Free refreshments. All welcome.

Bible Study: 7pm. 4th & 18th June, 2nd, 16th & 30th July.

Coffee Morning and Fundraising Stalls: 9.30am - 12noon. 1st Saturday of the month.
7th June, 5th July, 2nd August

Power of Prayer Group: 9.30am. Every Friday (Contact 07468518084 for venue)

Rev Anne Richardon's Section Leaving "Do": 6pm Sunday 27th July

Tittleshall

Services: Every Sunday at 9.30am

Coffee Mornings: 10.30am - 12noon. Every Wednesday

Toftwood

Services: Every Sunday at 11am

Weekly Lace Group: 9.30 - 12noon. Every Monday

Carpet Bowls: 1.45 - 3pm. Every Thursday

Coffee Shop & Stalls: 10am - 12noon. 7th June, 5th July, 2nd August

Walsingham

Services: 2nd Sunday of the month 4.30pm followed by a meal. All Welcome

Watton

Services: Every Sunday at 10.30am (mostly live-streamed) and 6.30pm

Coffee Mornings: 9.30am - 11.30am. Every Wednesday in the Methodist Centre. Delicious refreshments and a friendly welcome to all.

Tuesdays at Two: 2.30pm. 10th June and 8th July in the Methodist Centre. All are welcome to a variety of activities. Suitable for all abilities with refreshments.

Sunday 13th July Church Anniversary service led by Glyn and Angela Constantine

Wells

Services: Every Sunday at 11am

Prayer and Praise: 10.30am. Every Wednesday

Community Lunch at Congregational Hall: 12noon. Every Monday

Mindful Music: 10.30am. Wednesday 6th August

Carnival Songs of Praise: 11am. Sunday 10th August

Wendling

Services: 1st Sunday of the month 10.30am

Coffee Mornings: 10.30am - 12noon. Last Wednesday of the month. 25th June, 30th July. No coffee morning in August.

Circuit

Circuit Meeting: Wednesday 18th June at 7.15pm at Swaffham

Songs of Praise: 27th July at 6pm, with a final farewell to Rev Anne, at Swaffham

Seb Bell's Accreditation Service: Sunday 31st August at 6pm at Holt

Rev Neil's Welcome Service: 4th September at 6pm

Regular Dates

Day 	Activity 	Location 	Time 
Monday	Weekly Lace Group	Toftwood MC	9.30am - 12noon
	Community Lunch	Wells	12 noon
Tuesday	The Meeting Place Drop-In	Swaffham MC	10 - 12noon
	Women's Own	Dereham Trinity MC	2.45pm
Wednesday	Coffee Shop	Watton Centre	9.30am
	Coffee Morning	Tittleshall MC	10.30am - 12 noon
	Prayer & Praise	Wells	10.30am
Thursday	Coffee Morning	Litcham MC	10.30am - 12 noon
	Carpet Bowls	Toftwood MC	1.45 - 3pm
	Ecumenical Bible Study & Discussion Group	Garvestone /Mattishall MC	2pm
Friday	Prayer Time	Holt MC	9.30am
	Power of Prayer Group	Swaffham	9.30am

**If you have a prayer request, please contact Glyn Constantine
glynandang@gmail.com**

The Link Magazine

PRODUCED FOR THE CENTRAL NORFOLK CIRCUIT

Phone: 07736 467831



www.centralnorfolkmethodistcircuit.org.uk



Printed by Willow Tree Printing, Stibbard